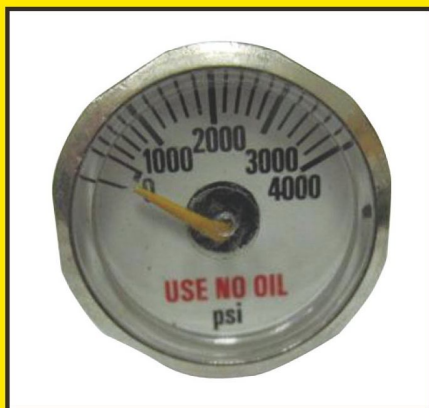


P550 SERIES SPIRAL TUBE GAUGE

Size	: 25mm, 31mm, 36mm, 40mm
Measuring Range	: 300 psi up to 5,000 psi (350 bar)
Dial	: aluminum, white background with markings and graduations
Window	: polycarbonate
Pointer	: painted brass
Case	: plating brass, 304 stainless steel
Socket	: brass, 304 stainless steel
Spiral Tube	: phosphor bronze spiral tube for pressure up to 3000 psi, 304 stainless steel for 4,000 psi to 5,000 psi (3000 psi available in beryllium UL approved and UL approved for fire extinguisher gauge)
Connection	: 1/8", 1/4"
Mounting	: center back
Accuracy	: $\pm 4\%$ of full scale
Operating Temperature Limit	: -20 ~ 60°C (-4 ~ 140°F)
Application	: compressor, pump, fire extinguisher, medical oxygen equipment and portable cylinder

S-25 (Direct Mount, Center Back Connection)



S-31(36/40) (Direct Mount, Center Back Connection)

