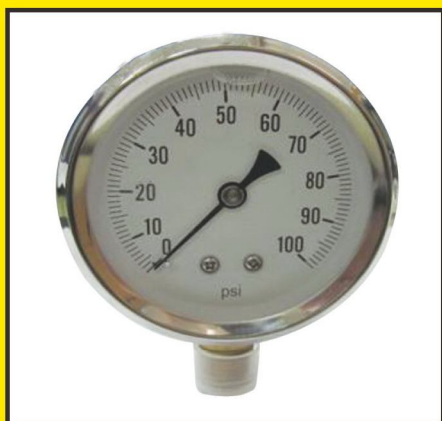


## P300 SERIES LIQUID FILLED PRESSURE GAUGE

Size	: 1.5" (40mm), 2" (50mm), 2.5" (63mm), 3" (75mm), 4" (100mm), 6" (150mm)
Measuring Range	: compound, vacuum 76cmHg (30"Hg) up to 15,000 psi (1,000 bar)
Dial	: white aluminum with markings and graduations
Window	: polycarbonate, glass
Pointer	: black finished aluminum
Ring	: 304 stainless steel
Case	: 304 stainless steel
Filling	: glycerin, silicone
Movement	: brass
Socket	: brass
Bourdon Tube	: phosphor bronze C-tube for vacuum to 800 psi, spiral tube wound for 1,000 psi to 15,000 psi
Connection	: 1/8", 1/4", 3/8", 1/2"
Mounting	: bottom and center back with surface, flush mount and U-clamp
Accuracy	: 1.5", 2" ( $\pm 1.5\%$ of full scale), 2.5", 3", 4", 6" ( $\pm 1.5\%$ of full scale)
Operating Temperature Limit	: -20 ~ 60°C ( -4 ~ 140 °F )
Application	: water, air, gas, oil and working fluid not corrosive to wetted parts

### L-A (Direct Mount, Bottom Connection)



### L-AD (Direct Mount, Center Back Connection)



## P300 SERIES LIQUID FILLED PRESSURE GAUGE

### L-B (Surface Mount, Bottom Connection)



### L-BD (Flush Mount, Center Back Connection)



### L-UD (Flush Mount, Center Back with U-clamp)

